



Meriwether Messages  
Week Ending October 18, 2014



Join us for Business after Hours - November 6<sup>th</sup>  
at the...

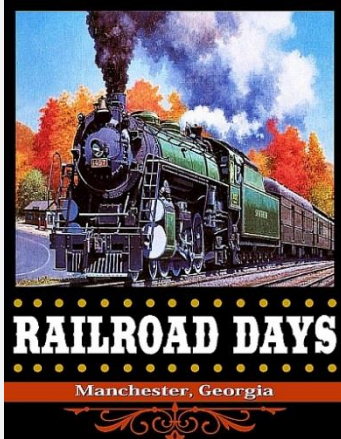
**Meriwether County Animal Shelter**  
**263 McLaughlin Road**  
**Greenville, GA 30222**  
**5:30 p.m. to 7:00 p.m.**



Welcome New Member: Wheelus Catering, 10737 Highway 100, Hogansville, GA. In business for over four years now, Wheelus Catering has earned a reputation for their great tasting food and excellent customer service. They are ready to assist you with all your catering needs from small family gatherings to large corporate events. They also offer specialty items, such as Thanksgiving and Christmas items, which, for large orders, are available for free delivery within a 25 mile radius. Single items or small orders are available for pick up or delivery charge added to price. Attached is a price list for some of their specialty BBQ items. For more information contact Fredene Wheelus at 678-850-1754 or Matt Brown at 706-594-6525



*Career Day at Unity Elementary November 7th:* Career day offers children an opportunity to hear from different speakers as well as gain knowledge about many types of jobs and careers. You are invited to provide a 15-20 minute presentation/explanation about your career. Props and/or uniforms are a great way to illustrate what it is that you do! Children need to be exposed to many lines of work and they need to understand the value of work in a community and to an individual and family. If you or someone you know would be interested in speaking at Career Day, please contact Erika White at 770-927-6488 or email [Erika.white@mcsga.org](mailto:Erika.white@mcsga.org).



The Manchester Mill will be the site of two events this weekend: Railroad Days will be held beginning Saturday at the Manchester Mill at 10 Callaway Street and will include personal collection displays; model layouts and railroad memorabilia.

Also at the Manchester Mill, *the annual Rotary Car Show*, with a variety of antiques and classics. As always the Rotary Chuck Wagon will be on hand to take care of the hungry appetites. Come out and join us for these two events which always attract a lot of visitors to the Manchester area.

+++++

## Lots of "Spook-tacular" Fun throughout the community:

### 1. Trunk-or-Treat

Trinity United Methodist Church in Durand invites you to bring your children to a safe & fun Halloween event on October 26, 4:30-6:30pm. They can "trunk-or-treat" and play games and go on a hayride. All is FREE.

For more information, email [revangie@bellsouth.net](mailto:revangie@bellsouth.net). Trinity is located at 25 Palm Lane (Hwy 18)

### 2. Trick-or-treat this year at the Camp Meriwether Haunted Barn (a family-friendly event)

Saturday, November 1, 2014, 3:00—7:00 p.m.

\$10 per child (girls and boys); no charge for adults or children under 5

Trick-or-Treat through the barn; Pony rides (ages 5 and up); Fortune Teller; Crafts; Haunted Forest Hike; Hot dogs; Drinks and concessions available for sale

Information about Girl Scouts and Summer Camp will be available

Camp Meriwether Girl Scout Camp - 653 Meadows Boone Road, Luthersville, GA 30251. Please call the camp director, Kathy Elliott, for more details or to host a trick-or-treat booth. 770-927-1020.

### 3. Historic Meriwether County Jail in downtown Greenville, invites you to come out and traipse through the "haunted cells" and "creepy hallways". The haunted jail is open every Thursday, Friday and Saturday during October and admission is \$10.00 per person

+++++

**Employment Opportunity:**

PruittHealth of Greenville is recruiting an RN/LPN wound care nurse. In addition to nursing credentials, individual must have had a minimum of two years' experience with wound care. Position requires on-call accessibility as scheduled. For more information contact:

**Hannah McNeal**  
Admissions Director  
PruittHealth - Greenville

**Phone:** (706) 672-4241  
**Email:** [hmcneal@pruithhealth.com](mailto:hmcneal@pruithhealth.com)



[pruithhealth.com](http://pruithhealth.com)

+++++

*City of Manchester – to host 3<sup>rd</sup> Annual Celebration of Trees Event on Friday, December 5<sup>th</sup> from 6:00 p.m. to 8:00 p.m. and December 6<sup>th</sup> from 11:00 a.m. to 5:00*



p.m. at the Community building in Manchester. Every business/organization/church etc. is invited to create a “theme-decorated” Christmas tree for display for the public. Each tree

will be marked with a sign prepared by the City. There will also be a tasty sweet shoppe to purchase your favorite Christmas holiday treats. Santa will be available for pictures on December 6<sup>th</sup>. The event will be free to the public. For more information or to reserve your spot, contact Kris Price at 706-846-3141

+++++

*Lace up those running shoes and join us for two upcoming runs:*

**Candlelight Tour Run:** The course is a fun, rolling race through the Holiday-season lighted downtown of Warm Springs. The mile fun run/walk begins at 9:30 p.m. with the 5K race starting at 10:00p.m. – Both races begin and end at the Meriwether County Chamber of Commerce building in Warm Springs. For more information contact [meriwetherchamber@windstream.net](mailto:meriwetherchamber@windstream.net) or visit the web site at <http://www.meriwethercountychamberofcommerce.com>



**Run, Run, Rudolph 5K run/walk and family fun run on December 7<sup>th</sup> at 8:00 a.m.** which begins at Callaway Recreation Center on Perry Street in Manchester. This race benefits the President Theatre and is a part of the Celebration of Trees and Annual Night Christmas Parade in Manchester. For more information contact Regina Garrett at [thepresidenttheatre@yahoo.com](mailto:thepresidenttheatre@yahoo.com) or Carole Black at [classicraceservices@gmail.com](mailto:classicraceservices@gmail.com)

+++++

**New! UNLIMITED HIGH SPEED INTERNET & VoIP Home Phone Service**

**HURRY! Limited Time Offer!**

**\$49<sup>99</sup> per month**

Unlimited High-Speed Internet & Local Calling  
Local calling to over 100 Georgia counties! Includes Caller ID, Call Waiting & more great features! Ask about our price guarantee!

Need to save on expensive cell phone minutes?  
**Add UNLIMITED Long Distance \$10<sup>99</sup> per month**

Available to residential customers only. Call for details.

**PS DATA wireless** **1-855-593-3278 (Toll Free)**

For more information on high speed internet availability in your area, contact Laurie Long with PS Data Wireless at 478-847-6415 or email [llong@pstel.com](mailto:llong@pstel.com) or call toll free 1-855-593-3278

+++++

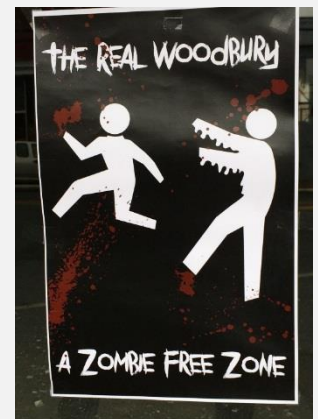
*Nice show of community support – Mayor Sandy Johnson, City of Woodbury and Louise Peavy, also from Woodbury, came out to support the City of Warm Springs at their recent Harvest Hoe-down parade. Great example for the rest of us!!!*



+++++



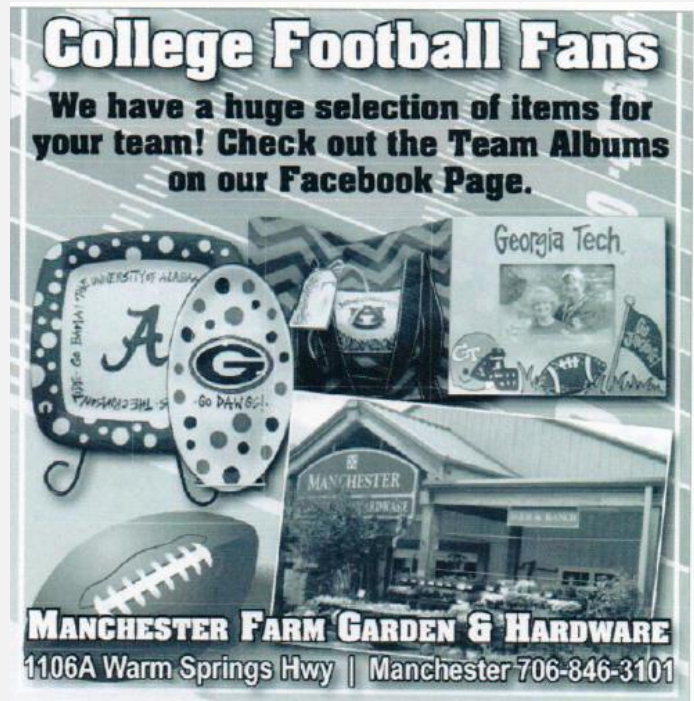
*And speaking of Woodbury – the citizens have decided to take advantage of the “Walking Dead” phenomenon and have placed these posters in store fronts and outside stores all along the downtown area. If you are a fan of the show; you know that Woodbury is the fictitious town where a significant part of the story line takes place. The “Governor” in the series declared Woodbury to be a zombie free zone – hence the use of this wording. Since posting these on the Chamber’s FB page, there have been over 3,560 viewings!!!*







Come in a visit with Manchester Farm Garden & Hardware and see their huge selection – sure to please all of the sports fans. Visit their Facebook page and see all the collections from the University of Georgia; Auburn; Alabama and Georgia Tech



<https://www.facebook.com/pages/Manchester-Farm-Garden-Hardware/149290575092066>

+++++



**Early Voting is underway:** You can vote at the Elections Office in Greenville at 137 S. Court Square Mondays through Fridays, beginning October 13th through October 31<sup>st</sup> from 8:30 a.m. to 5:00 p.m. and on Saturday October 25<sup>th</sup> from 9:00 a.m. to 4:00 p.m.

*The long awaited deepening of the Savannah port* is expected to start later this year. The project comes as East Coast ports throughout the U. S.s prepare to handle larger cargo ships expected to arrive from the Panama Canal in 2016. Deeper ports in Savannah and elsewhere on the eastern seaboard could lead to a 3 to 5 percent shift of cargo from the West Coast to the East Coast. Larger vessels cannot fit through the Panama Canal, so they are servicing the West Coast. As they open the Panama Canal, those larger vessels can carry more boxes and thus reduce the overall cost for the shipment and that gets passed on. In other words, it'll be cheaper for companies to ship goods to Atlanta. The state has already set aside \$266 million dollars for the port deepening project. An agreement signed last week allows the U. S. Army Corps of Engineers to use that money to start construction on the Port of Savannah.

*Have Announcements?*

*Events to Share?*

*Sales to Promote?*

*Your Chamber newsletter is a tool for you!!*